

Structural Design Software in Europe AB (StruSoft)
is an innovative Swedish software company with more than 25 years of experience in specialized software applications for the building industry.

**FEM-Design**

An advanced modelling software for FE-analysis and design of load-bearing concrete, steel and timber structures.

**WIN-Statik**

A suite of powerful and easy to use applications for common design tasks such as beams, columns or frames.

**IMPACT**

An open database-driven system for modelling and production of concrete precast elements. Includes a reinforcement module that can be used stand-alone.

**VIP-Energy**

A suite of software for simulation of the entire building energy balance.

Leader in engineering software systems
including analysis, design, modelling and energy

StruSoft can provide you with the right tools to solve simple design tasks as well as complex three-dimensional structures

September 2010



StruSoft
Structural Design Software



StruSoft
Structural Design Software

www.strusoft.com

www.strusoft.com



Quick

A complete yearly hour by hour calculation only takes a couple of seconds irrespective of its complexity.

This makes testing of different scenarios very easy.



Easy

Included in VIP-Energy is a library of materials, walls, ceilings and roofs, floors, windows, valves, heat pumps and more which makes it easy to get started.

Personal, or for the client custom-made, databases or calculation templates can be stored in order to render the work more effective.



Accurate

The dynamic calculations in VIP-Energy have been developed through many years of research. The high quality of the calculation model ensures valid results even for challenging architecture such as passive houses.



Validated

VIP-Energy has been validated with:

IEA-BESTEST
ASHRAE-BESTEST
CEN-15265

and more than 20 years of research and commercial use.



General

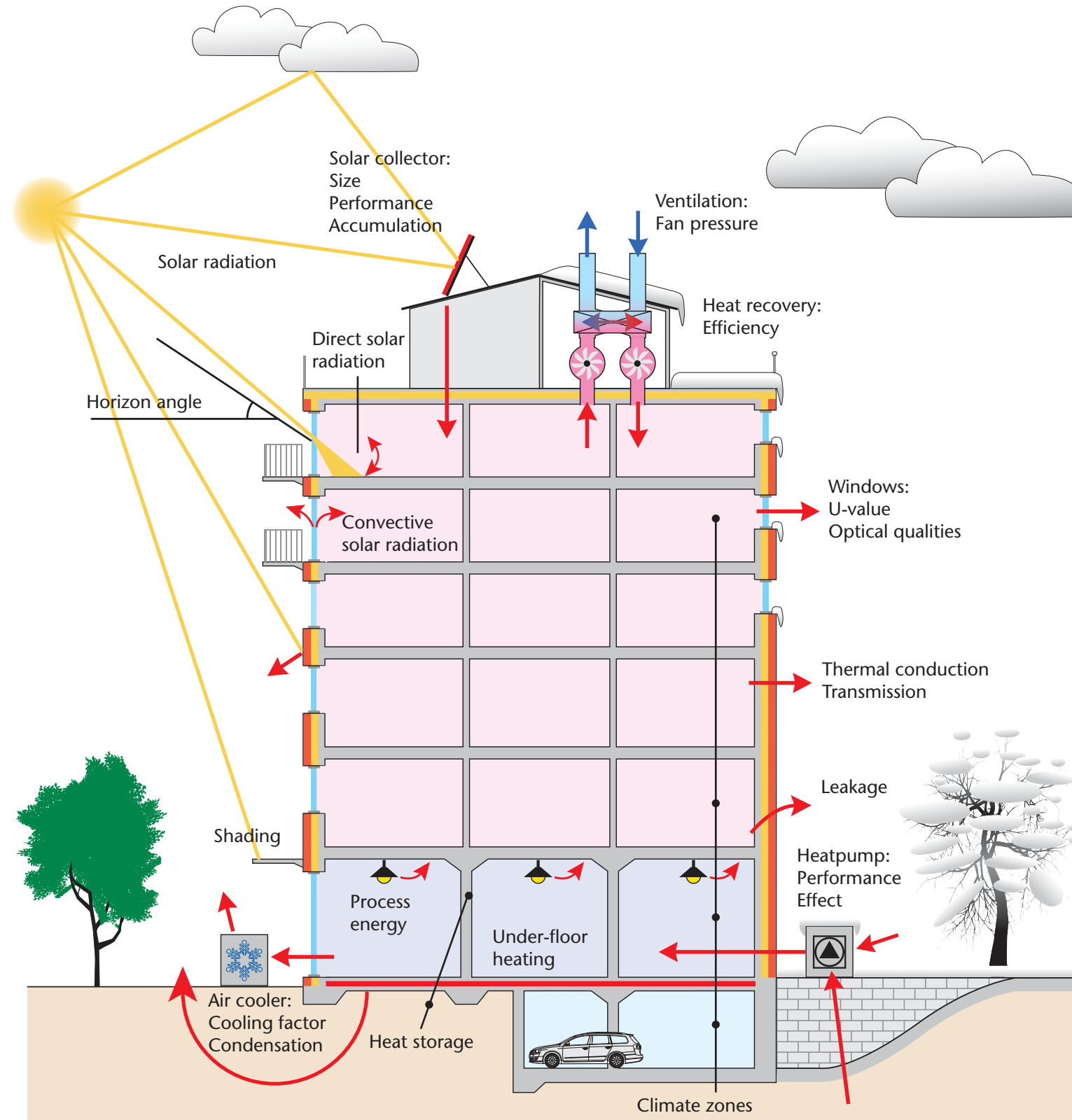
VIP-Energy can be used for all types of buildings and usages worldwide.

VIP-Energy is used by all professions involved in the building construction industry such as consultants, architects, contractors and building managers.



VIP-Energy

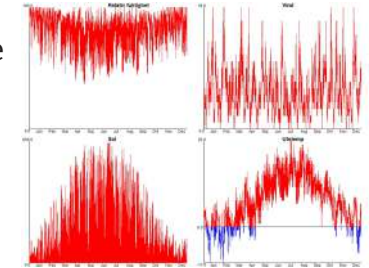
VIP-Energy is an application used for calculating the energy performance for buildings. The software quickly and easily simulates the energy balance of the building hour by hour for a complete year.



Input Data

Outdoor Climate

- Wind
- Sun
- Temperature
- Humidity



Installations

- Heat pump
- Air cooler
- Solar collector
- Under-floor heating
- Ventilation with a heat-exchanger

Climate data: relative humidity, wind velocity, solar radiation and temperature.

Building Physics

- Leakage
- Thermal flows
- Thermal storage in materials and ground
- Climate-controlled solar shading
- 10 climate zones

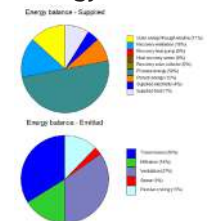
Other

- Input data from ArchiCAD
 - Climate files can be generated from VIP-Energy Climate Data
- <http://climate.vipenergy.se>

Results

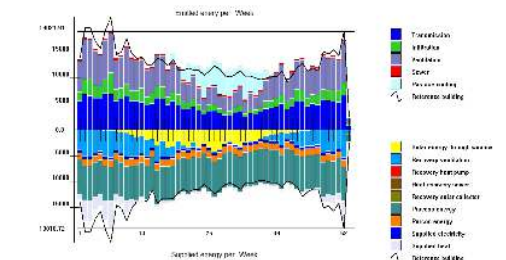
Graphical

- Bar chart: supplied and emitted energy
- Pie chart: supplied energy
- Pie chart: emitted energy



Numerical

- Time results for energy
- Key numbers and energy balance
- Specifications for energy flows
- Comparison with standards
- User-definable printout templates



Result: energy balance over a year.